

PROMAX 3D CLASSIC LITE
INCLUDED OPTIONS



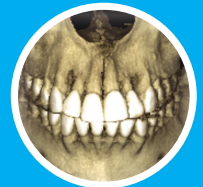
Ultra Low
Dose™
protocol

ULTRA LOW DOSE



SMARTPAN™

2D & 3D WITH ONE SENSOR

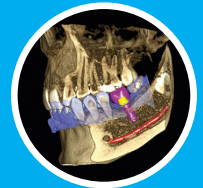


FULL DENTITION VOLUME

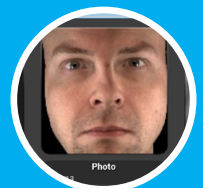
PLANMECA PROMAX 3D
AVAILABLE OPTIONS



ENDODONTIC IMAGING MODE



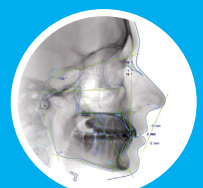
IMPLANT PLANNING MODULE



3D PHOTO CAPTURE



3D MODEL SCANNING



ONE-SHOT CEPHALOSTAT



ProMax 3D
Classic LITE[±]

FROM ONLY

£699^{*}
per month
ex vat

Promotional Price
£36,900[†]

Planmeca ProMax 3D family True all-in-one units for all your imaging needs, at a price that will raise a few smiles 😊

- All imaging modalities available:
 - CBCT • Panoramic • Cephalometric • Bitewing •
 - 3D Photo capture • 3D Model scan • Endodontic mode •
- ProMax 3D Classic LITE FOV 80 x 80mm, 80 x 50mm, 50 x 80mm, 50 x 50mm. Stitched FOV 140 x 105 x 80mm
- Industry leading Planmeca Romexis® software
- 3D imaging with **an even lower dose** than panoramic imaging with the Planmeca Ultra Low Dose™ imaging protocol

To arrange your personal demonstration in our mobile showroom, PlanDemo, visit www.plandemo.co.uk. Alternatively, you can call us freephone on 0800 5200 330 or email marketing@planmeca.com

PLANMECA

Planmeca UK Ltd, Suite 2, Ricoh Arena, Phoenix Way, Coventry, CV6 6GE.
Tel: 0800 5200 330 • Email: marketing@planmeca.com • Web: www.planmeca.com

Terms & Conditions apply. [±]Planmeca ProMax Classic LITE special offer is valid until Friday 28th April 2017. Full specification is available on request. *Finance figures are for illustration purposes only. Please contact your finance provider for further details [†]All prices exclude VAT